



FRÍANT

ReddiSpace Acoustic Booths Pricebook

TABLE OF CONTENTS

INTRODUCTION

Terms and Conditions 3

REDDISPACE ACOUSTIC BOOTHS

QuickTime Small 5
MeTime Working 6
WeTime Medium 7
OurTime Large 8
ADA Pod 9
ReddiSpace Finishes 11

Terms and Conditions

PRICES

All Prices are F.O.B. point (Continental U.S.). We reserve the right to change prices without prior notice.

ORDERING

Purchase Orders should be sent to Friant & Associates, LLC at orders@friant.com, or faxed to (510) 535-6895. If your specifications were created with CAP, GIZA, or Project Matrix please send the worksheet (SP4 or SIF) with your Purchase Order.

TERMS

Net 30 days from date of invoice. Invoices are delinquent if not paid 30 days from date of invoice. In the event timely payment is not made, interest will be charged at the rate of 1.5% per month on delinquent accounts. Buyers will also be liable for normal collection costs and attorney's fee. 50% deposit is required with every order, unless prior arrangements have been made.

ORDERS

Orders are only accepted by issuance of our formal acknowledgment, and are subject to the terms set forth herein and on our order acknowledgment. It is the responsibility of the buyer to review our acknowledgment for accuracy.

LEAD TIME

Lead times are subject to availability. For current standard lead times, please visit <https://www.friant.com/shipping-and-orders/>

SHIPPING

Friant generally palletizes, boxes, and/or shrink-wraps its products. If buyer requests additional packaging or special shipping, then it is responsible for any extra costs that result. Buyer obtains title to products and assumes the risk of loss for them upon shipment from Friant's plant.

CLAIMS

We are not responsible for damage suffered in transit. Merchandise should be inspected for possible freight damage upon delivery. The consignee should file for damage or shortages with the carrier within 5 days of delivery. You are also protected for "concealed damage" if you file claim with the carrier within 5 days of delivery. Buyer must make all claims against Friant for defects, errors, or shortages in writing within 10 days after delivery. Failure to make such a claim shall constitute full acceptance.

RETURNS

No merchandise may be returned without our written consent and shipping instructions. Unauthorized returns will not be accepted and will be returned freight collect.

PARTIAL SHIPMENTS

We will make every attempt to ship orders complete and on schedule. However, we reserve the right to make partial shipments, as merchandise is ready. Invoices covering these shipments are to be paid as they become due.

ORDER CHANGE — CANCELLATIONS

Our order confirmation is final and binding. Any order change or cancellation is subject to our ability to conform. For the most up to date information, always review the order change/cancellation policy online. Allowable changes within the posted policy must be made in writing.

Terms and Conditions continued

SHIPMENT AND PREPAID FREIGHT

Unless otherwise instructed, we reserve the option to ship by what is, in our opinion, the best possible way. Upon request, we will prepay and add freight for accounts with established credit.

DELIVERY

We are not liable for delay or failure of delivery due to strikes and/or differences with workmen, war, riot, fire, compliance with government regulations, acts of nature, failure or delays of sources of supply, or any other causes beyond our control.

STORAGE

If buyer cannot accept delivery when merchandise is ready, we reserve the right to transfer goods to storage. Costs of transfer and storage will be charged to the buyer's account, and we will deem such transfer as constituting shipment for all purposes, including invoicing, as of the date the transfer is made.

CONSTRUCTION — SPECIFICATIONS

All items are produced to price list specifications unless otherwise advised. All dimensions shown are approximate. Manufacturer reserves the right to make modifications and/or improvements without prior notice.

CALIFORNIA PROP 65 WARNING

Products in this catalog can expose you to chemicals including wood dust, which is known to the State of California to cause cancer or birth defects or other reproductive harm. For more information go to <https://www.p65warnings.ca.gov/products/furniture-products>.”

TSCA TITLE VI

Friant products are TSCA Title VI Compliant

RIGHTS AND WARRANTIES

Warranty information for all Friant products can be found in the Dealer Resource Center (dealers.friant.com/warranty) or on the Friant website (www.friant.com/warranty)

QuickTime Pod



QuickTime Pod Includes

- Steel exterior with tempered glass door
- Door swing is left-handed only
- Casters
- Acoustical interior
- Motion activated LED lighting and ventilation fan
- 10' cord
- (2) plugs, (1) USB-A, and (1) USB-C port
- Includes 12"D x 24"W wall-mounted worktop, specify Top Finish, edge to match
- Order stool separately, see below
- **In stock finish options: Case:** Onyx or Snow, **Interior:** 18 Grey, **Carpet:** GR Grey **Top Finish:** CW White

Specification Options

Casing: see page 11
 Interior: see page 11
 Carpet: see page 12
 Top Finish: see page 12

Order Example

Casing: SNOW snow
 Interior: 18 Grey
 Carpet: GR Grey
 Top Finish: CW Cloud White

description	model #	height	width	depth	list price
QuickTime ReddiSpace Pod, small	FFLEX-S	86.5"	40.5"	40.5"	\$20,476

Optional Furniture for QuickTime Pod



Adjustable Height Stool

Adjustable Height Stool

- For use with QuickTime Pod only
- White base with grey cushion

Anchor Package

- (4) pack of anchors to fix ReddiSpace structure to the floor

description	model #	width	height	list price
Adjustable Height Stool	FFLEX.S.STOOL	14"	24" - 33"	\$693
ReddiSpace Anchor Package	FANCHOR.4	-	-	\$200

ReddiSpace

MeTime Pod



MeTime Pod Includes

- Steel exterior with tempered glass door
- Door swing is left-handed only
- Casters
- Acoustical interior
- Motion activated LED lighting and ventilation fan
- 10' cord
- (4) plugs, (2) USB-A, and (2) USB-C port
- Order furniture separately, see below for options

Specification Options

Casing: see page 11
 Interior: see page 11
 Carpet: see page 12

Order Example

Casing: SNOW snow
 Interior: 18 Grey
 Carpet: GR Grey

description	model #	height	width	depth	list price
MeTime ReddiSpace Pod, working	FFLEX-W	86.5"	63.5"	47"	\$42,857

Optional Furniture for MeTime Pod



Wall-mounted Worktop

Wall-mounted Worktop

- 24"D x 42"W
- For use with MeTime Pod only
- Hardware is included
- Specify Top Finish: see page 12
- Edge to match

Anchor Package

- (4) pack of anchors to fix ReddiSpace structure to the floor

Order task chair separately

description	model #	width	depth	list price
Wall-mounted Worktop	FFLEX.W.WS2442	42"	24"	\$646
ReddiSpace Anchor Package	FANCHOR.4	-	-	\$200

ReddiSpace

WeTime Pod



WeTime Pod Includes

- Steel exterior with tempered glass door
- Door swing is left-handed only
- Casters
- Acoustical interior
- Motion activated LED lighting and ventilation fan
- 10' cord
- (4) plugs, (2) USB-A, and (2) USB-C ports
- Order furniture separately, see below for options
- **In stock finish options: Case:** Onyx or Snow, **Interior:** 18 Grey, **Carpet:** GR Grey

Specification Options

Casing: see page 11
 Interior: see page 11
 Carpet: see page 12

Order Example

Casing: SNOW snow
 Interior: 18 Grey
 Carpet: GR Grey

description	model #	height	width	depth	list price
WeTime ReddiSpace Pod, medium	FFLEX-M	86.5"	86.5"	47"	\$61,905

Optional Furniture for WeTime Pod



Freestanding Table

Freestanding Table

- 20"D x 28"W
- For use with WeTime Pod only
- Table base is included, CW only
- Specify Top Finish: see page 12
- Edge to match
- **In stock color:** CW White



Sofa

Sofa, 42"W

- For use with WeTime Pod only
- Sold each
- WeTime Pod can accommodate (2) sofas
- Specify Fabric: See page 12
- Sofa feet are BU only
- **In stock color:** 1333 Grey

Anchor Package

- (4) pack of anchors to fix ReddiSpace structure to the floor

description	model #	width	depth	list price
Freestanding Table	FFLEX.M.TB2028	28"	20"	\$978
Sofa, 42"W	FFLEX.M.SOFA42	42"	23"	\$2,454 each
ReddiSpace Anchor Package	FANCHOR.4	-	-	\$200

ReddiSpace

OurTime Pod



OurTime Pod Includes

- Steel exterior with tempered glass door
- Door swing is left-handed only
- Casters
- Acoustical interior
- Motion activated LED lighting and ventilation fan
- 10' cord
- (4) plugs, (2) USB-A, and (2) USB-C ports
- Order furniture separately, see below for options
- **In stock finish options: Case:** Onyx or Snow, **Interior:** 18 Grey, **Carpet:** GR Grey

Specification Options

Casing: see page 11
 Interior: see page 11
 Carpet: see page 12

Order Example

Casing: SNOW snow
 Interior: 18 Grey
 Carpet: GR Grey

description	model #	height	width	depth	list price
OurTime ReddiSpace Pod, large	FFLEX-L	86.5"	86.5"	59"	\$66,667

Optional Furniture for OurTime Pod



Freestanding Table

Freestanding Table

- 20"D x 40"W
- For use with OurTime Pod only
- Table base is included, CW only
- Specify Top Finish: see page 12
- Edge to match
- **In stock color:** CW White



Sofa

Sofa, 54"W

- For use with OurTime Pod only
- Sold each
- OurTime Pod can accommodate (2) sofas
- Specify Fabric: See page 12
- Sofa feet are BU only
- **In stock color:** 1333 Grey

Anchor Package

- (4) pack of anchors to fix ReddiSpace structure to the floor

description	model #	width	depth	list price
Freestanding Table	FFLEX.L.TB2040	40"	20"	\$1,015
Sofa, 54"W	FFLEX.L.SOFA54	54"	23"	\$2,719 each
ReddiSpace Anchor Package	FANCHOR.4	-	-	\$200

ADA Pod



ADA Pod Includes

- Steel exterior with tempered glass door
- Door swing is left-handed only
- Automatic door opener
- Acoustical interior
- Motion activated LED lighting and ventilation fan
- 10' cord
- (4) plugs, (2) USB-A, and (2) USB-C ports
- ADA Pod does not have floor.
- Order furniture separately, see below for options

Specification Options

Casing: see page 11
 Interior: see page 11

Order Example

Casing: SNOW snow
 Interior: 18 Grey

description	model #	height	width	depth	list price
ADA ReddiSpace Pod	FFLEX-ADA	86.5"	86.5"	59"	\$71,429

Optional Furniture for ADA Pod



Foldable Table

Foldable Table

- 24"D x 40"W
- For use with ADA Pod only,
- Table folds up for wheelchair access
- Table base is included, Black only
- Specify Top Finish: CW or BU
- Edge to match



Foldable Chair

Foldable Chair

- For use with ADA Pod only
- Sold each
- ADA Pod can accommodate up to (4) chairs
- Chairs fold up for wheelchair access
- Black fabric with wood base only

Anchor Package

- (4) pack of anchors to fix ReddiSpace structure to the floor

description	model #	width	depth	list price
Foldable Table	FFLEX.ADA.TB2440	40"	24"	\$1,943
Foldable Chair	FFLEX.ADA.CHAIR	20"	19"	\$2,108 each
ReddiSpace Anchor Package	FANCHOR.4	-	-	\$200

ReddiSpace Finish Selection

Finish Selections for ReddiSpace Pods



Casing



Interior



Carpet

Finish Selections for ReddiSpace Optional Furniture



Top Finish

Edge to Match
Table base is CW only

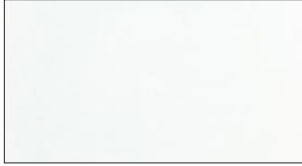


Fabric

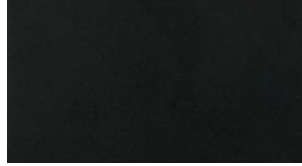
Sofa foot finish is BU only

ReddiSpace Finishes

Casing



SNOW
Snow

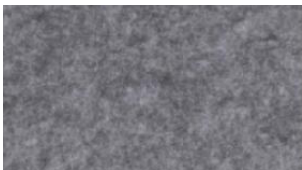


ONYX
Onyx

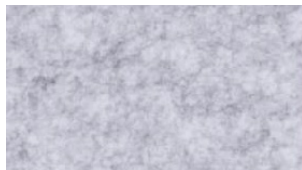


8180
Oak

Interior (Acoustical PET)



18
Grey



03
Lt Grey



22
Taupe



27
Sky



08
Lilac



26
Eggplant



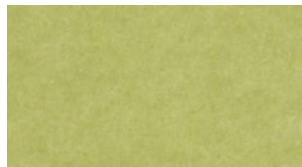
46
Ivy



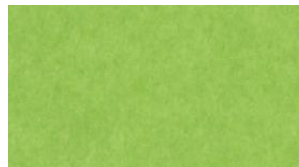
05
Lake



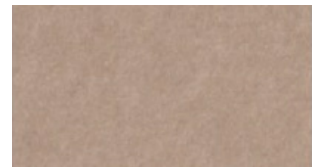
06
Tangerine



12
Avocado



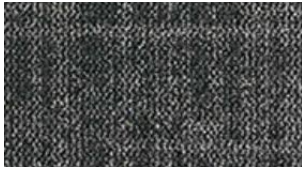
15
Lime



14
Café

ReddiSpace Finishes

Carpet



GR
Grey



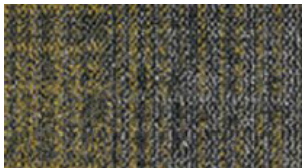
GB
Grey Blue



AS
Ash



GN
Green



YL
Yellow

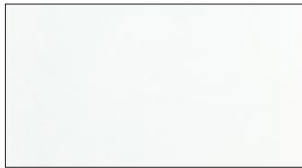


GP
Graphite

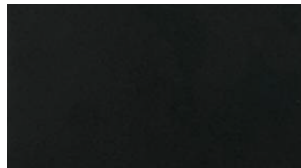


CH
Charcoal

Top Finish (for Worksurfaces)



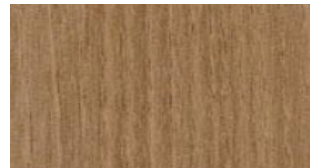
CW
White



BU
Black

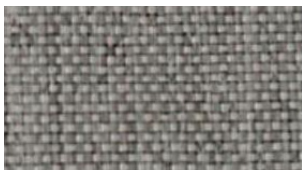


938
California Walnut

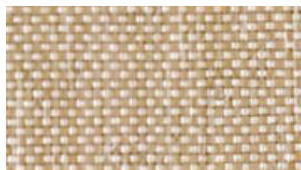


699
Rift

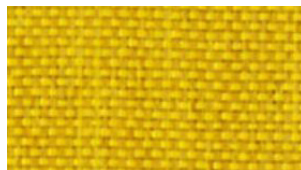
Fabric (for Sofas)



1333
Grey



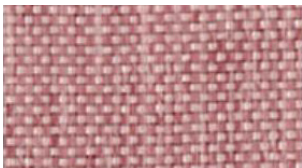
1300
Tan



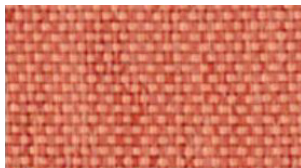
1302
Sunshine



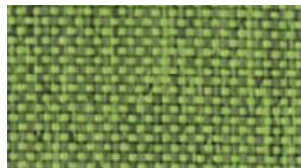
1313
Periwinkle



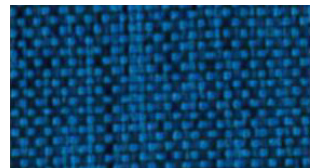
1320
Mauve



1321
Sunset



1309
Moss



1318
Ocean