



**FRÍANT**

Materials and Finishes Catalog







FRÍANT

## A Great Project Starts with Quality Materials

At Fríant, we believe in furniture that's designed to perform and solutions that provide our end-users the elements needed to create an efficient and modern workspace.

We offer an extensive range of quality fabrics and materials, which we have sourced to meet both the environmental and value standards Fríant is known for.

Want to customize your workspace? Work with Customer Success for a more personal look by customizing your system with COM fabrics (Customers Own Materials).

To explore more, visit [friant.com](https://friant.com).

Fríant, **All Work Styles Welcome.**



# FABRICS

## SLIDE FABRIC LINE



## JOURNEY FABRIC LINE

\* For Journey application details, see fabric application guide on page 15.





Fabric is scheduled for discontinuation when inventory is exhausted. Contact Customer Success for current stock levels. After discontinuation fabric will be available with extended lead time.

For further information, view the Materials Reference Guide on the DRC

## SILKY FABRIC LINE

\* For Silky application details, see fabric application guide on page 15.



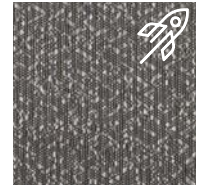
PF401-1  
NATURAL



PF401-2  
PARIDS



PF401-3  
OVERCAST



PF401-5  
GRAPHITE

## PASSAGE FABRIC LINE

\* For Passage application details, see fabric application guide on page 15.



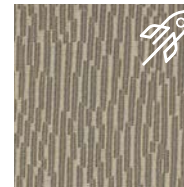
PF601-8  
AMBER

## TERRAIN FABRIC LINE

\* For Terrain application details, see fabric application guide on page 15.



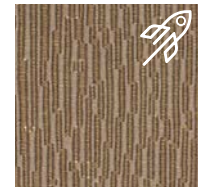
PF701-1  
CLOUD



PF701-2  
DUSK



PF701-3  
WAVE



PF701-4  
EARTH

## STICKS FABRIC LINE



PF501-3  
SAGE

## SKY FABRIC LINE

\* For Sky application details, see fabric application guide on page 15.



PF301-1  
TERRA



PF301-2  
BIRCH



PF301-3  
MOSS

# SOFT SEATING FABRICS

---

## FAWN SOFT SEATING FABRIC LINE



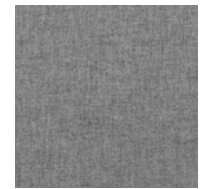
PF901-1  
HEATHER



PF901-2  
NAVY



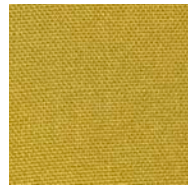
PF901-3  
SAFFRON



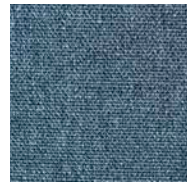
PF901-4  
FROST

---

## HARRISON SOFT SEATING FABRIC LINE



PF1001-1  
CANARY



PF1001-2  
DUSK



PF1001-3  
STONE



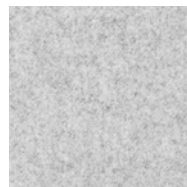
PF1001-4  
STEEL

---

## FELT SOFT SEATING FABRIC LINE



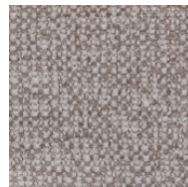
PF1101-1  
CHARCOAL



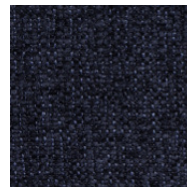
PF1101-3  
FOSSIL

---

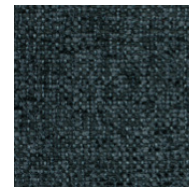
## COBBLESTONE SOFT SEATING FABRIC LINE



PF2201-1  
LINEN



PF2201-2  
INDIGO



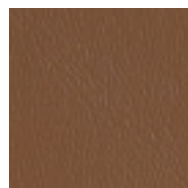
PF2201-3  
FOREST



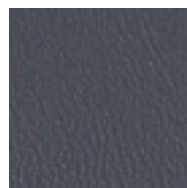
PF2201-4  
FLINT

---

## NAPOLI MATERIAL



PF2301-1  
WHISKEY

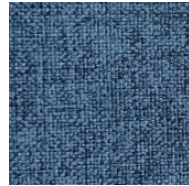


PF2301-2  
NIGHTCAP

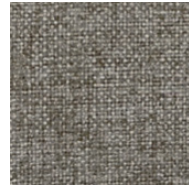
---

---

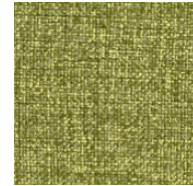
**SUNDAY**  
**SOFT SEATING**  
**FABRIC LINE**



PF1301-2  
CADET



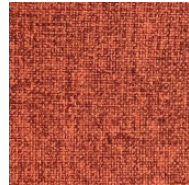
PF1301-9  
DUNE



PF1301-10  
PISTACHIO



PF1301-11  
WINE



PF1301-12  
RUST



PF1301-13  
SUNFLOWER



PF1301-14  
YAM



PF1301-15  
MIST

# FINISHES

## WORKSURFACES LAMINATE



Available on Essentials Program



**M1**  
LIGHT MAPLE



**M2**  
LIGHT CHERRY



**M3**  
MEDIUM CHERRY



**M4**  
DARK MAHOGANY



**M6**  
LIGHT GRAY



**M9**  
CLOUD WHITE



**M10**  
ESPRESSO



**M11**  
LIGHT WALNUT



**M12**  
MEDIUM WALNUT



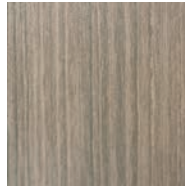
**M13**  
LICORICE



**M14**  
CAROB



**M16**  
TUNDRA



**M18**  
CAPITAN



**M19**  
FOG



**M20**  
SANDSTONE



**M23**  
BARK



**M25**  
WINTER



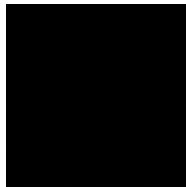
**M26**  
STORM



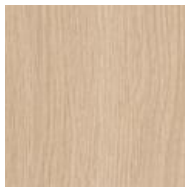
**M27**  
MEDIUM ASH



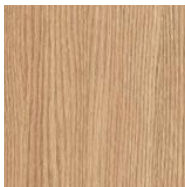
**M28**  
ARCTIC



**M29**  
RAVEN



**M30**  
BARLEY



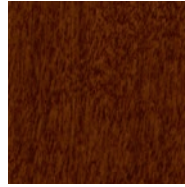
**M31**  
CAMEL

## WOOD VENEERS

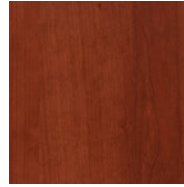
**Note:** Veneer finishes are available on our Willow and Mesa lines standard



AMERICAN  
CHERRY



AXIOM  
CHERRY



BILTMORE  
CHERRY



CORDOVAN  
CHERRY



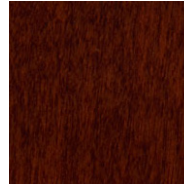
WILD  
CHERRY



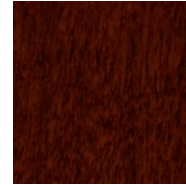
DEEP  
CHERRY



ESPRESSO  
CHERRY



MEDIUM  
CHERRY



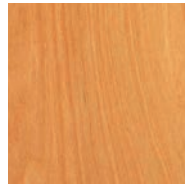
WARM  
CHERRY



FUSION  
MAPLE



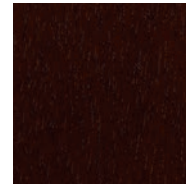
GOLDEN  
MAPLE



NATURAL  
MAPLE



WARM  
MAPLE



LIGHT  
MAHOGANY



MEDIUM  
MAHOGANY



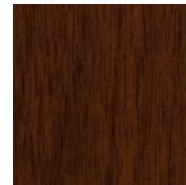
DEEP  
MAHOGANY



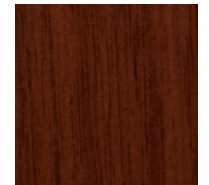
MEDIUM  
OAK



NATURAL  
OAK



NATURAL  
WALNUT



WARM  
WALNUT

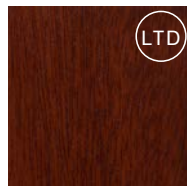


EBONY  
WALNUT

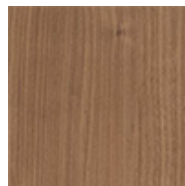
## GITANA



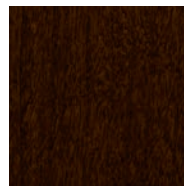
Laminate is scheduled for discontinuation when inventory is exhausted. Contact Customer Success for current stock levels.



MAHOGANY



LIGHT  
WALNUT



ESPRESSO



CHERRY

# HARDSURFACE LAMINATE

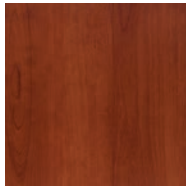
**Note:** Specify hardsurface laminate on the following: v



7909-60  
FUSION MAPLE



7054-60  
WILD CHERRY



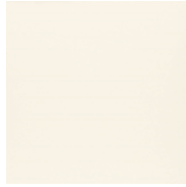
7924K-70  
BILTMORE CHERRY



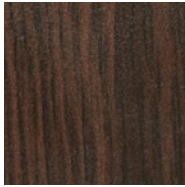
7040K-78  
FIGURED MAHOGANY



D327-60  
PEPPERDUST



1573-60  
FROSTY WHITE



7933K-07  
CAFELLE



7937-38  
RIVER CHERRY



7965K-12  
WALNUT HEIGHTS



WF392-NG  
LICORICE GROOVZ



WF356-58  
DRIFTWOOD



WF393-58  
CONCRETE GROOVZ



WF340-58  
ARIA



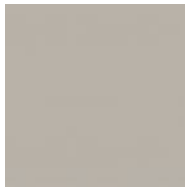
AF210-58  
SILVER FROST



AF209-58  
SHADOW FROST



WF397-58  
STROMBOLI



961-58  
FOG GREY



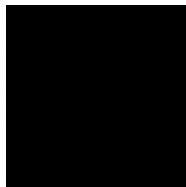
AF200-58  
PEWTER FROST



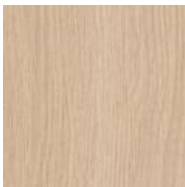
8842-58  
WEATHERED ASH



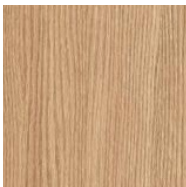
8841-58  
WHITE ASH



1595-60  
BLACK



7850-60  
BEIGEWOOD



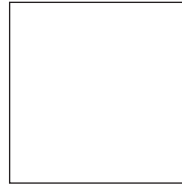
7954-38  
NATURAL RIFT

# PAINT



Available on Essentials Program

## DASH INTERRA VERITY



CW  
CLOUD WHITE

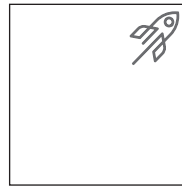


SV  
SILVER



BU  
BLACK UMBER

## MY-HITE & BEAM



CW  
CLOUD WHITE



SV  
SILVER



BU  
BLACK UMBER

## SYSTEM 2 BASE (PLASTIC)



LG  
LIGHT GRAY



MT  
MEDIUM TONE



DT  
DARK TONE

## SYSTEM 2 PAINT



LG  
LIGHT GRAY

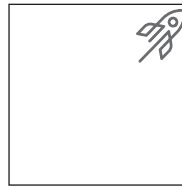


MT  
MEDIUM TONE

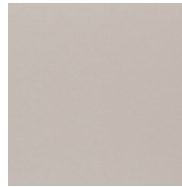


DT  
DARK TONE

## NOVO



CW  
CLOUD WHITE



SV  
SILVER



MT  
MEDIUM TONE



DT  
DARK TONE

# FINISH & EDGE MATRIX

Below, you'll find our finishes and paints available for our full line of products.

INTERRA | DASH | NOVO | VERITY | MY-HITE | WILLOW\* | SYSTEM 2 | MESA\*

## RED - ESSENTIALS PROGRAM

### WORKSURFACE FINISHES

M1	Light Maple	M12	Medium Walnut	M25	Winter
M2	Light Cherry	M13	Licorice	M26	Storm
M3	Medium Cherry	M14	Carob	M27	Medium Ash
M4	Dark Mahogany	M16	Tundra	M28	Arctic
M6	Light Gray	M18	Capitan	M29	Raven
M9	Cloud White	M19	Fog	M30	Barley
M10	Espresso	M20	Sandstone	M31	Camel
M11	Light Walnut	M23	Bark		

### EDGE FINISHES

E1	Light Maple	E11	Medium Tone	E22	Fog	E33	Barley
E2	Light Cherry	E12	Dark Tone	E23	Sandstone	E34	Camel
E3	Medium Cherry	E13	Licorice	E26	Bark		
E4	Dark Mahogany	E14	Light Walnut	E28	Winter		
E6	Light Gray	E15	Medium Walnut	E29	Storm		
E8	Black Umber	E17	Carob	E30	Medium Ash		
E9	Cloud White	E19	Tundra	E31	Arctic		
E10	Espresso	E21	Capitan	E32	Raven		

### GITANA FINISHES

MAHO	Mahogany $\Delta$	LTWNT	Light Walnut	ESPR	Espresso	CHER	Cherry $\Delta$
------	-------------------	-------	--------------	------	----------	------	-----------------

### COLLECTION PAINTS

CW Cloud White DT Dark Tone LG Light Gray MT Medium Tone SV Silver

#### DASH | INTERRA | VERITY

CW, SV, BU

#### NOVO

DT, MT, CW, SV

#### SYSTEM 2

Trim DT, MT, LG Base DT, MT, LG

#### MY-HITE | BEAM

CW, SV, BU

\*Wood veneer options available for Willow and Mesa

$\Delta$  Laminate is scheduled for discontinuation when inventory is exhausted. Contact Customer Success for current stock levels

Note: Images shown simulate our materials, but are not exact matches of the finished product. Samples may vary slightly.



## FABRIC APPLICATION GUIDE

We install our line of fabrics non-directionally by default on all our products with a few exceptions which we have highlighted below. For full fabric application details see Materials Reference Guide on the DRC.

### SYSTEM 2

85H Panels: Directional

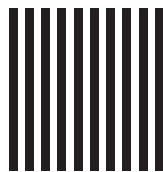
### NOVO

85H Panels: Directional

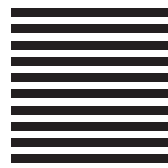
### INTERRA

Fabric Tiles: Directional

Exception: Sky Collection



non-directional  
(vertical)



directional  
(horizontal)

### ORDERING PHYSICAL SAMPLES

Please consult your sales rep or visit our Dealer Resource Center  
<http://dealers.friant.com/dealers/samples/>







**friant.com**