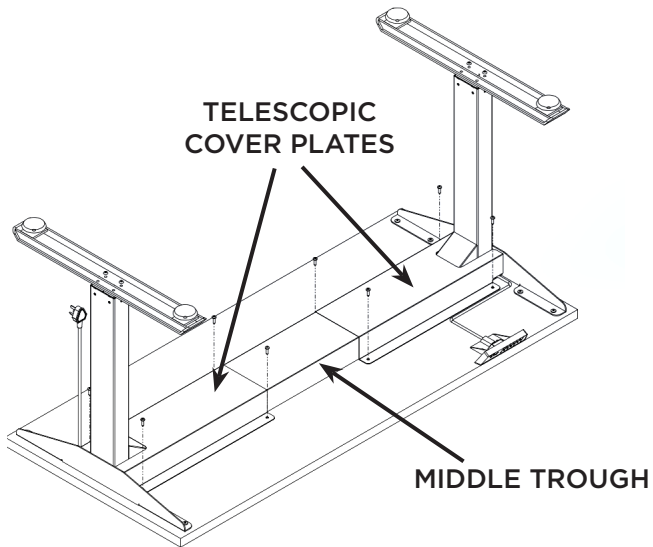


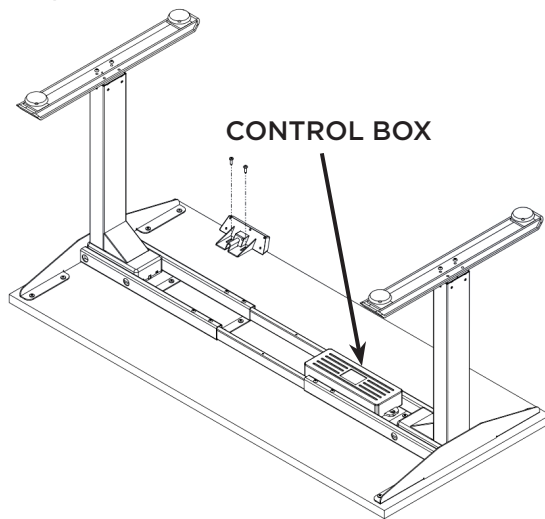
## My Hite 3 Stage Control Box Replacement

**Step 1:** Unscrew and remove the telescopic cover plates & middle trough.



**NOTE:** Wearing protective eyewear is advised due to wood shavings falling while unscrewing the cover plates.

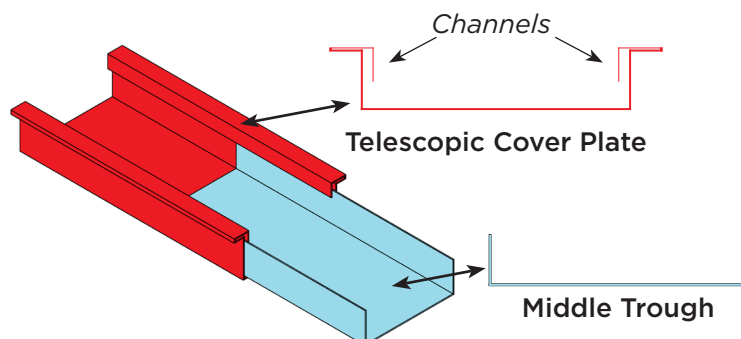
**Step 2:** Disconnect the wires and slide the control box out from its housing. Replace with a new control box.



**NOTE:** The control box must be installed with the label facing outwards.

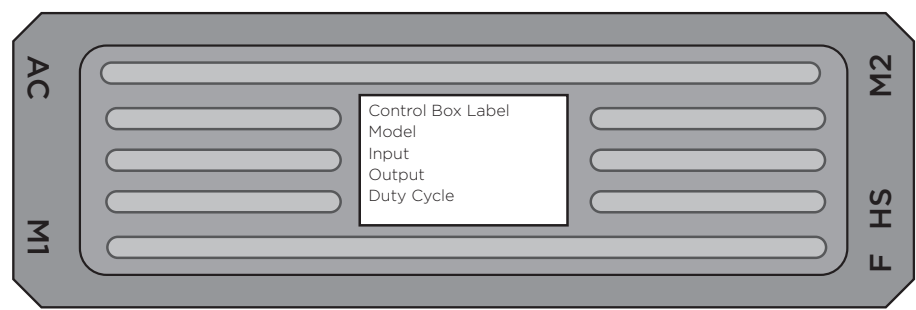
**Step 3:** Reconnect the cables to the control box. Refer to the Control Box diagram on the next page for the connection locations.

**Step 4:** Reinstall the telescopic cover plates & middle trough. The middle trough must be aligned through the channels of the telescopic cover plates.



### 3 Stage Control Box Diagrams

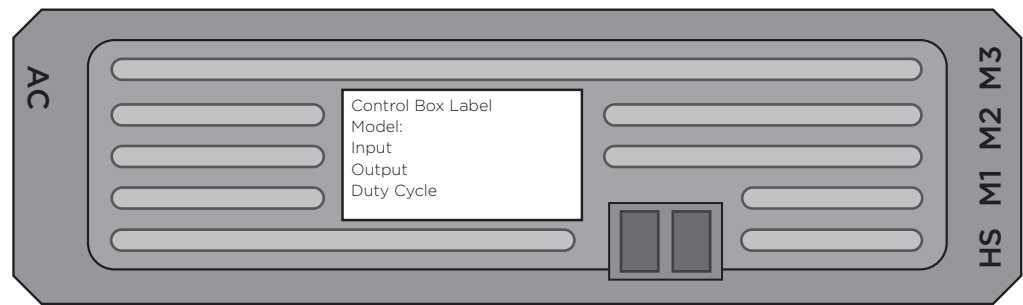
#### 3 Stage 2 Leg Control Box



AC - Power Cord  
M1, M2 - Leg cables  
HS - Display Cable  
F - N/A

---

#### 3 Stage 3 Leg Control Box



AC - Power Cord  
M1, M2, M3 - Leg cables  
HS - Display Cable