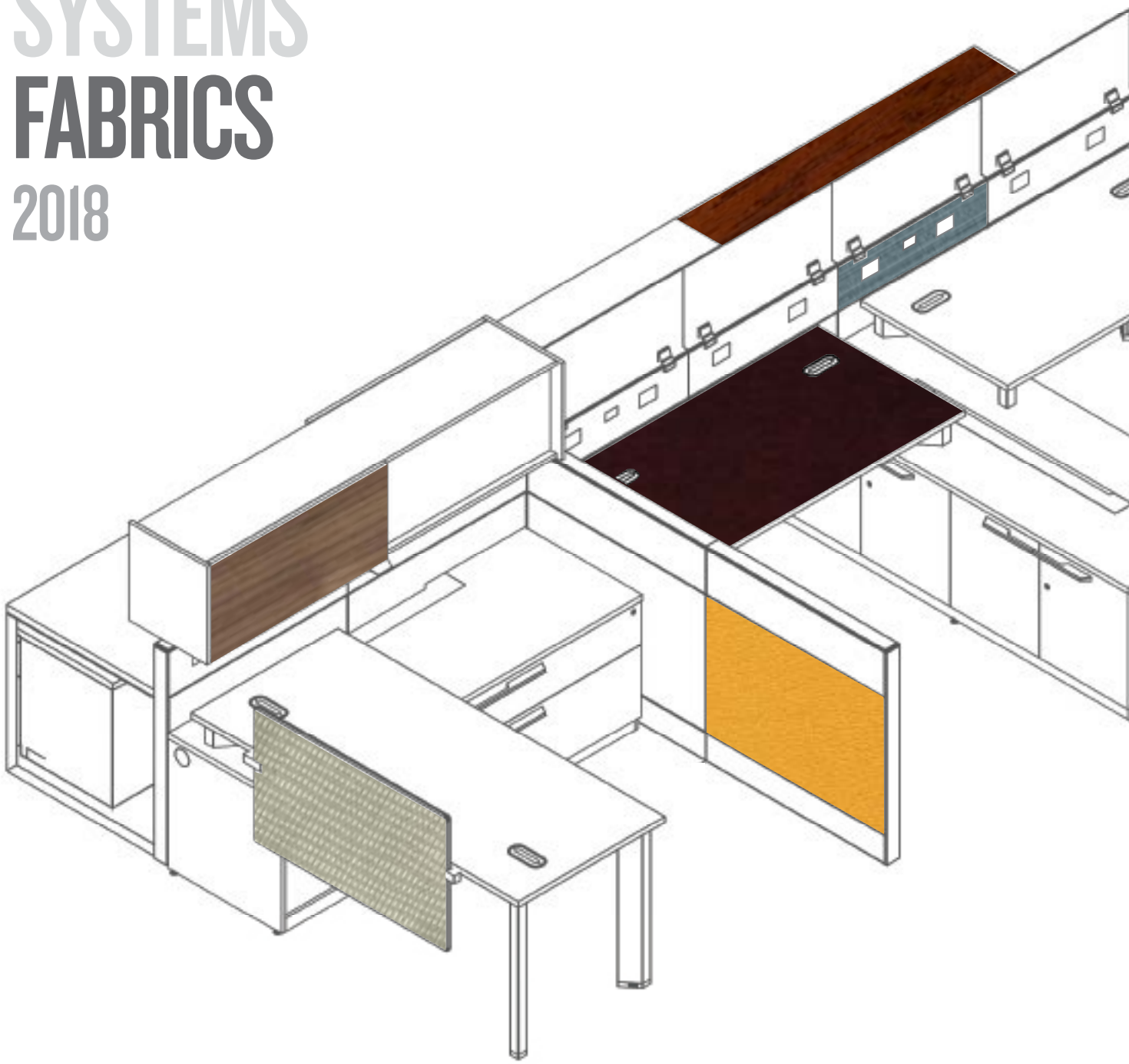


SYSTEMS FABRICS

2018

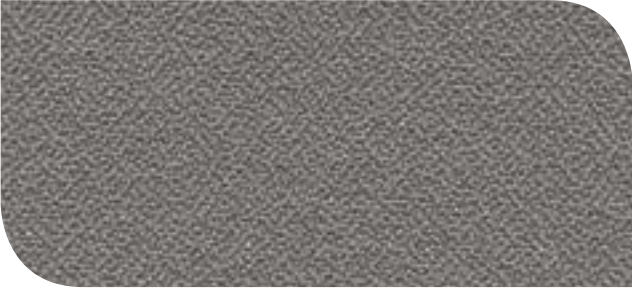


FRIANT FABRICS

Please order material samples online at www.friant.com/samples

Color may vary slightly between dye lots. Application testing of these products is recommended.

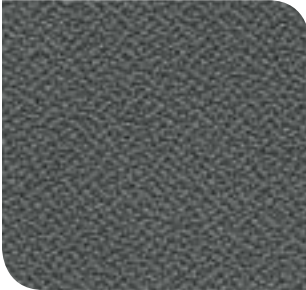
SLIDE



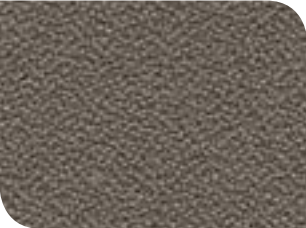
PEWTER PF101-3
SLIDE 10 DAY ●



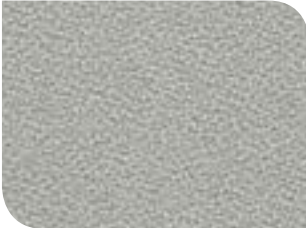
CARAMEL PF101-1
SLIDE 10 DAY ●



SLATE PF101-2
SLIDE 10 DAY ●



JAVA PF101-7
SLIDE 10 DAY ●



STERLING PF101-9
SLIDE 10 DAY ●



CREMA PF101-10
SLIDE 10 DAY ●



MUSTARD PF101-13



AVOCADO PF101-14



PUMPKIN PF101-15



OCEAN PF101-16



BLUEBERRY PF101-17



CARDINAL PF101-18



FLAMINGO PF101-19



SERENITY PF101-20



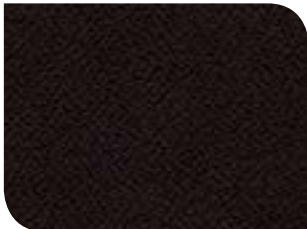
AZURE PF101-21



ORCHID PF101-22



PLUM PF101-23



RAVEN PF101-24

SILKY



NATURAL PF40I-1
SILKY 10 DAY ●



PARIS PF40I-2
SILKY 10 DAY ●



OVERCAST PF40I-3
SILKY 10 DAY ●

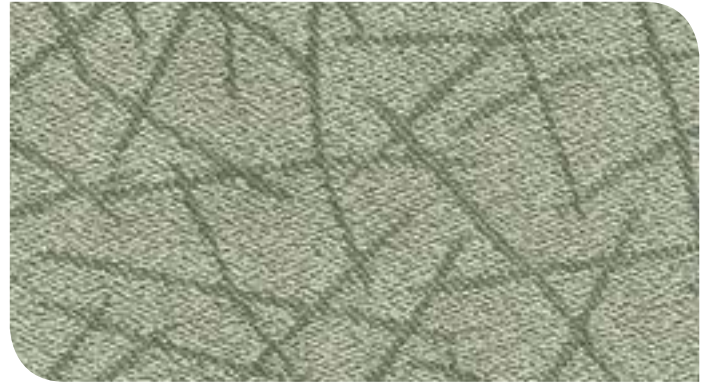


FIELD PF40I-4
SILKY 10 DAY ●



GRAPHITE PF40I-5
SILKY 10 DAY ●

STICKS



SAGE PF50I-3
STICKS 10 DAY ●



SMOKE PF50I-1
STICKS 10 DAY ●

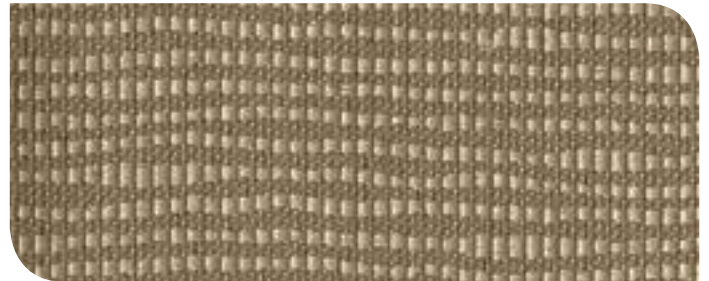


ALMOND PF50I-2
STICKS 10 DAY ●



STRAW PF50I-4
STICKS 10 DAY ●

SKY



TERRA PF30I-1
SKY 10 DAY ●



BIRCH PF30I-2
SKY 10 DAY ●



MOSS PF30I-3
SKY 10 DAY ●

QUICKSHIP PROGRAM System 2, Novo & My-Hite

● = 10 DAY QUICKSHIP

NOTE: The Quickship program is available for System 2, Novo and My-Hite.

FABRIC SPECIFICATIONS

Content	100% Recycled Polyester
Weight	9.17 ± .35 oz./yard
Width	66 inches
Flammability	Class A or 1

PASSAGE

Fabric directions shown are for Interra, Dash, Tiles and Verity*



LEAF PF601-5
PASSAGE 10 DAY ●



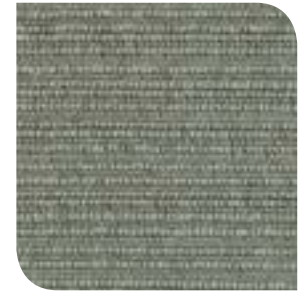
GULL PF601-1
PASSAGE 10 DAY ●



GROVE PF601-2
PASSAGE 10 DAY ●



WING PF601-3
PASSAGE 10 DAY ●



QUARTZ PF601-4
PASSAGE 10 DAY ●



TRAIL PF601-7
PASSAGE 10 DAY ●



BROOK PF601-6
PASSAGE 10 DAY ●



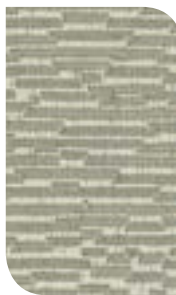
AMBER PF601-8
PASSAGE 10 DAY ●

TERRAIN

Fabric directions shown are for Interra, Dash, Tiles and Verity*



CLOUD PF701-1
TERRAIN 10 DAY ●



DUSK PF701-2
TERRAIN 10 DAY ●



WAVE PF701-3
TERRAIN 10 DAY ●



EARTH PF701-4
TERRAIN 10 DAY ●

PASSAGE & TERRAIN APPLICATION

Passage and Terrain fabrics are **not available** for application on acoustical panels or cushions.

*PASSAGE & TERRAIN FABRIC DIRECTIONS

NOTE: Passage and Terrain fabrics are applied with the lines running vertically on System 2* and Novo.

Fabric rotated 90° on System 2* and Novo
*excluding 85" high panels

