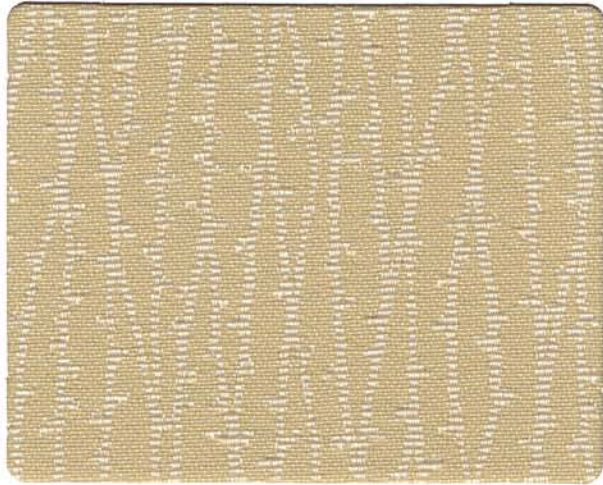
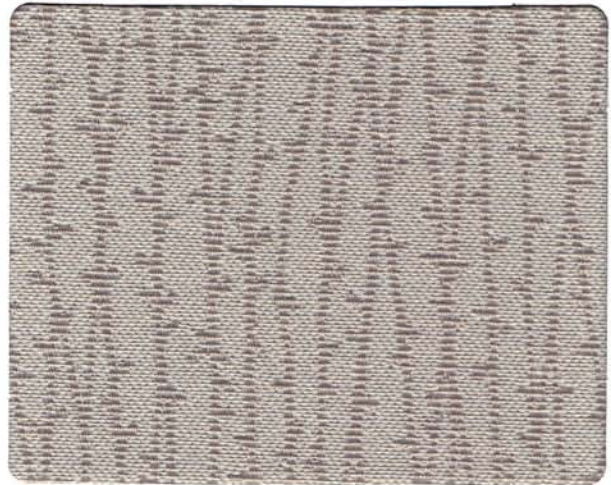




System 2 Lighting Collection



GLADE
7405 SANDHURST



GLADE
7406 TWILIGHT



TRAIL
7413 CHAMPAGNE



TRAIL
7414 CHIFFON



TRAIL
7415 DESERT VIEW



TRAIL
7417 DRIFTWOOD



TRAIL
7412 BISQUE



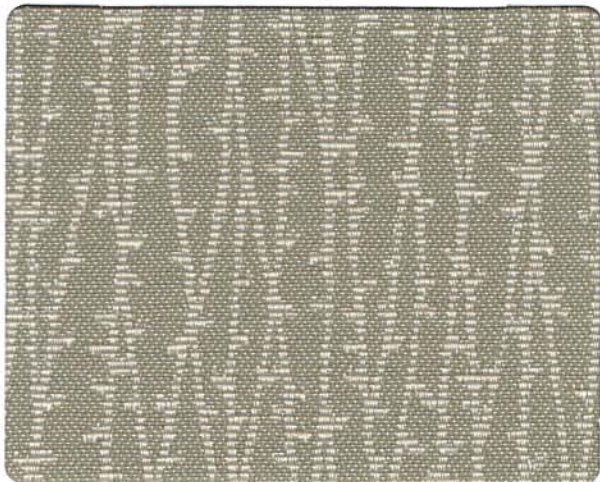
TRAIL
7418 ROSE TAN



TRAIL
7416 HEATHERGLEN



TRAIL
7419 MYSTERIA



GLADE
7404 FIELD



GLADE
7407 PYRITE



U.L. RECOGNIZED COMPONENT

	GLADE	TRAIL
FABRIC SPECIFICATIONS		
CONTENT	100% POLYESTER	100% POLYESTER
REPEAT	H - 14.75" V - 7.75"	NOT APPLICABLE
WEIGHT	11.84 OZ/LIN YD	11.84 OZ/LIN YD
ENDS/PICKS	138/49 PER INCH	138/50 PER INCH
WIDTH	66"	66"
ORIGIN	CHINA	CHINA


PERFORMANCE CHARACTERISTICS		
TENSILE STRENGTH ASTM D5034	WARP: 261.0 LBS FILL: 281.0 LBS	WARP: 252.0 LBS FILL: 271.0 LBS
SEAM SLIPPAGE ASTM D434	WARP: 34.2 LBS FILL: 35.2 LBS	WARP: 27.2 LBS FILL: 36.9 LBS
COLORFASTNESS TO LIGHT AATCC 16A	40 HRS. CLASS 4	40 HRS. CLASS 4
COLORFASTNESS TO CROCKING AATCC 8	5.0 DRY, 5.0 WET	5.0 DRY, 5.0 WET

FLAMMABILITY		
ASTM E-84 (TUNNEL TEST)	CLASS A OR 1	CLASS A OR 1
CALIFORNIA TECHNICAL BULLETIN 117 SECTION E (CS-191-53)	PASSES	PASSES

RECOMMENDED CLEANING CARE	
W-S	WATER-BASED CLEANING AGENTS AND FOAM MAY BE USED FOR CLEANING. THIS FABRIC MAY ALSO BE CLEANED WITH MILD, WATER-FREE SOLVENTS. CLEANING BY A PROFESSIONAL CLEANING SERVICE IS RECOMMENDED.

VARIATIONS IN COLOR AND TEXTURE ARE INHERENT TO THESE TEXTILES.
APPLICATION TESTING OF THIS PRODUCT IS RECOMMENDED.

 **GLADE AND TRAIL** ARE DIRECTIONAL FABRICS. PLEASE USE CAUTION WHEN CUTTING AND APPLYING.

 U.L. RECOGNIZED COMPONENT: **GLADE AND TRAIL** CAN BE APPLIED WITHOUT NEED FOR FURTHER TESTING TO ANY OFFICE PANEL SYSTEM WHICH HAS BEEN AUTHORIZED FOR USE WITH FABRICS INCLUDED IN UL'S FABRIC RECOGNITION PROGRAM.